

Compact and Affordable: An Innovative HD Security Camera from Sony

Sony is pleased to introduce a unique addition to its network HD cameras lineup, the SNC-CH210.

This compact and affordable HD camera, supporting H.264, MPEG-4, and JPEG compression formats, deliver excellent and detailed picture in HD resolution at 30 frames per second (fps). Incorporating the three-megapixel "Exmor™" CMOS image sensor from Sony, which is specially designed for surveillance applications, this camera demonstrates high image quality and low noise for surveillance. What's more, the SNC-CH210 has useful functions such as "Stream Squared" and PoE.

With excellent HD picture quality in compact design, SNC-CH210 Fixed Network Camera is ideal for many surveillance applications, including retail outlets, schools, and other commercial buildings.



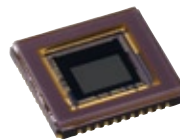
HD

Network HD Camera SNC-CH210

Preliminary

Key Features

- Excellent picture quality in HD 720p resolution, supporting H.264 at 30fps **HD**
- 3 Megapixel (2048 x 1536) maximum resolution
- The "Exmor" CMOS sensor realizes high image quality and high sensitivity for surveillance
Exmor™
- Three codecs (H.264, MPEG-4, JPEG) with dual streaming capability
- Innovative design
Compact, slim, and two body colors: suitable for many applications where the over-security with bulky cameras would be avoided



■ "Stream Squared" function

"Stream Squared" is a function that allows simultaneous streaming of two 4:3 aspect ratio videos in user-selectable SD resolutions. You can select the entire image or a portion of the image from the original field of view and resize to SD resolution or lower for each stream. With this feature, the SNC-CH210 can replace two SD cameras installed in the same line of view.

Example



Dual Streaming

1st Streaming
VGA video of a whole



2nd Streaming
VGA video of a cropped area



- Power over Ethernet (PoE) capability
- ONVIF conformance **ONVIF**

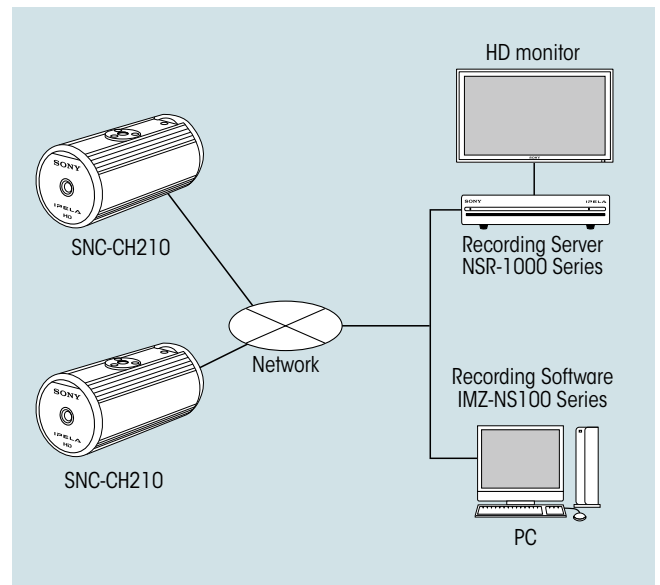
Connect Your Vision

IPELA™

SPECIFICATIONS

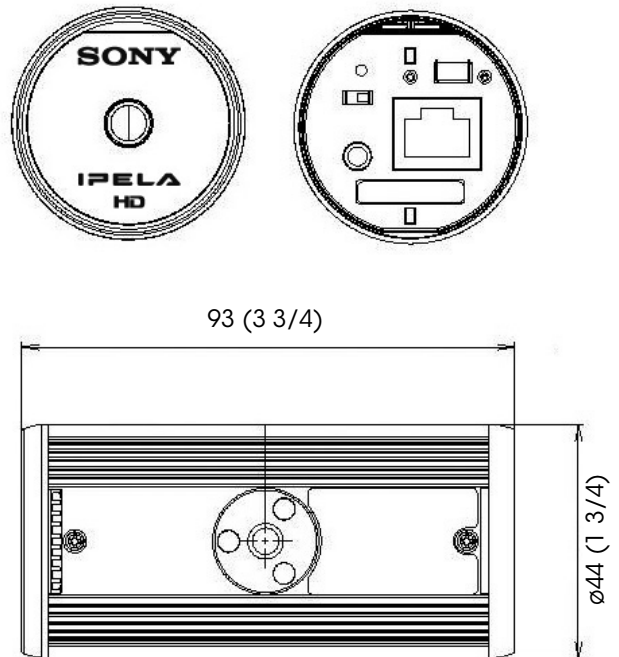
SNC-CH210	
Camera	
Image device	1/2.8 type progressive scan "Exmor" CMOS sensor
Minimum illumination	TBD
Number of effective pixels (H x V)	3 Megapixel (2096 x 1561)
Electronic shutter speed	1s to 1/10000s
Gain control	Auto
Exposure control	Auto Slow Shutter
White balance mode	Auto, Preset, One-push WB, Manual
Lens type	Fixed
Horizontal viewing angle	Approx. 90 degree (TBD)
Focal length	f=3.3 mm
F-number	F2.8
Minimum objects distance	TBD
Camera Features	
Day/Night	Yes (electrical D/N)
Image	
Codec image size (H x V)	2048x1536 (JPEG Only), 1920x1080, 1600x1200, 1680x1050, 1440x900, 1280x1024, 1280x960, 1366x768, 1280x800, 1280x720, 1024x768, 1024x576, 768x576, 720x576, 704x576, 800x480, 720x480, 640x480, 640x360, 384x288, 320x240, 320x180 (H.264, MPEG-4, JPEG)
Video compression format	H.264, MPEG-4, JPEG
Codec streaming capability	Dual streaming
Maximum frame rate	H.264: 12fps (1920x1080) (TBD) / 30 fps (1280 x 720) MPEG-4: 15fps (1920x1080) (TBD) / 30 fps (1280 x 720) JPEG: 7fps (2048x1536) (TBD) / 30 fps (1280 x 720)
Scene Analytics	
Motion detection	Yes (TBD)
Tamper alarm	Yes (TBD)
Network	
Protocols	IPv4, IPv6, TCP, UDP, ARP, ICMP, IGMP, HTTP, HTTPS, FTP (client/server), SMTP, DHCP, DNS, NTP, RTP/RTCP, RTSP, SNMP (MIB-2)
ONVIF conformance	Yes
Number of clients	5 (TBD)
Authentication	IEEE802.1X
Analog Video Output	
Signal system	NTSC / PAL
Horizontal resolution	TBD
S/N ratio	TBD
Interface	
Ethernet	10BASE-T / 100BASE-TX (RJ-45)
Serial interface	No
Card slots	No
Analog video output	Mini Jack
Sensor input	x 1
General	
Mass	TBD
Dimensions (ø x H)	44 x 93 mm (1 3/4 x 3 3/4 inches)
Power requirements	PoE
Power consumption	TBD
Operating temperature	0 to 50 °C (32 to 122°F)
Storage temperature	-20 to +60 °C (-4 to +140 °F)
System Requirements	Operating system Windows XP, Windows Vista, Windows 7 Processor Intel Core2 Duo 2 GHz or higher Memory 1 GB or more Web browser Microsoft Internet Explorer Ver.6.0, 7.0, or 8.0

SYSTEM CONFIGURATIONS



DIMENSIONS

Unit: mm (inches)



The SNC-CH210 includes software developed by the OpenSSL Project for use in the OpenSSL Toolkit (<http://www.openssl.org/>).

Distributed by

© 2010 Sony Corporation. All rights reserved.
 Reproduction in whole or in part without written permission is prohibited.
 Features and specifications are subject to change without notice.
 The values for weight and dimension are approximate.
 Sony is a registered trademark of Sony Corporation.
 IPELA and "Exmor" are trademarks of Sony Corporation.
 Windows, XP, and Vista are trademarks of Microsoft Corporation.
 Core is a trademark of Intel Corporation.
 All other trademarks are the property of their respective owners.